

CREATE  
YOUR STYLE  
with SWAROVSKI ELEMENTS



DESIGN PROJECT  
HALLOWEEN  
SPOOKY BAT



# HALLOWEEN SPOOKY BAT



## SWAROVSKI ELEMENTS

Materials for one bat

Article	Product Group	Article No.	Amount	Size	Color	Color Code
	Pendants	6000	4 pcs.	15.5x7.5mm	Siam	208
	Pendants	6670	2 pcs.	24 mm	Ruby	501
	Pendants	6680	3 pcs.	20 mm	Ruby	501

## Supplies & Tools

### Supplies

- 1 Cardboard, 35x25 cm, black
- 3 Crimping tubes, small, black
- 9 Jump rings, 8mm, black
- Nylon thread, 0.25 mm, transparent, 1.5 - 2 m
- 2 sheets of Paper, A4

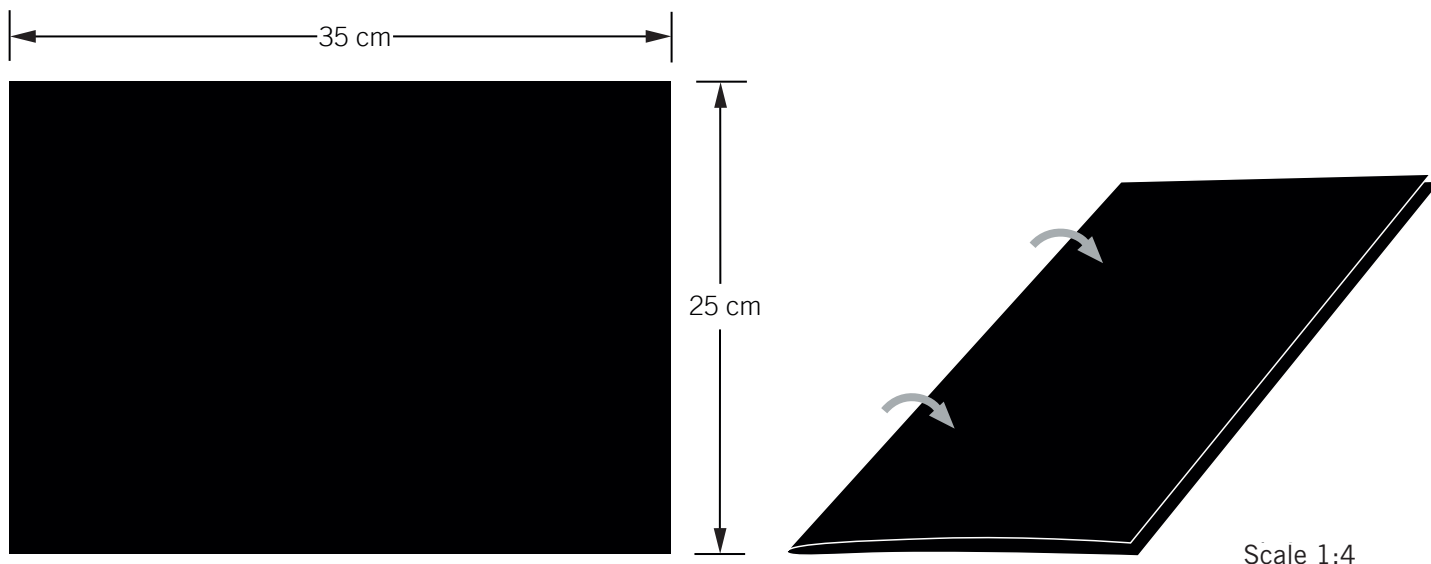
### Tools

- Flat nose pliers
- Punching pliers
- Ruler
- Scissors
- Sewing needle
- Tape

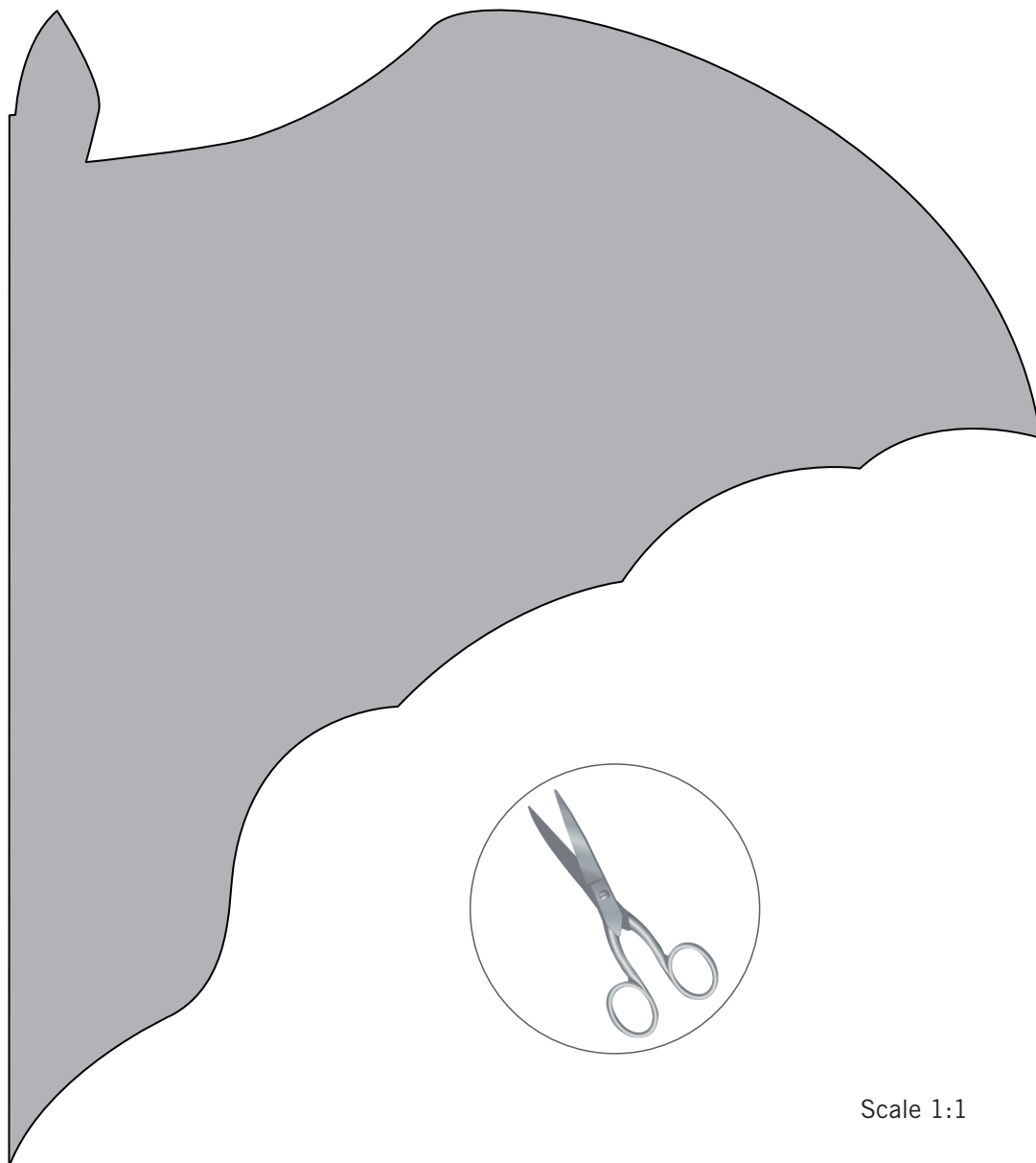
Level of design: BEGINNER

Have also a look at the **text instruction** at the last page!

## STEP 1

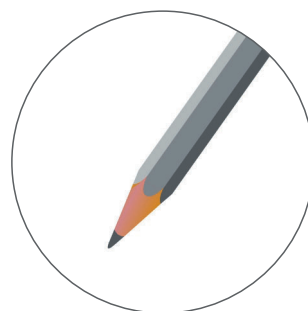


STEP 2

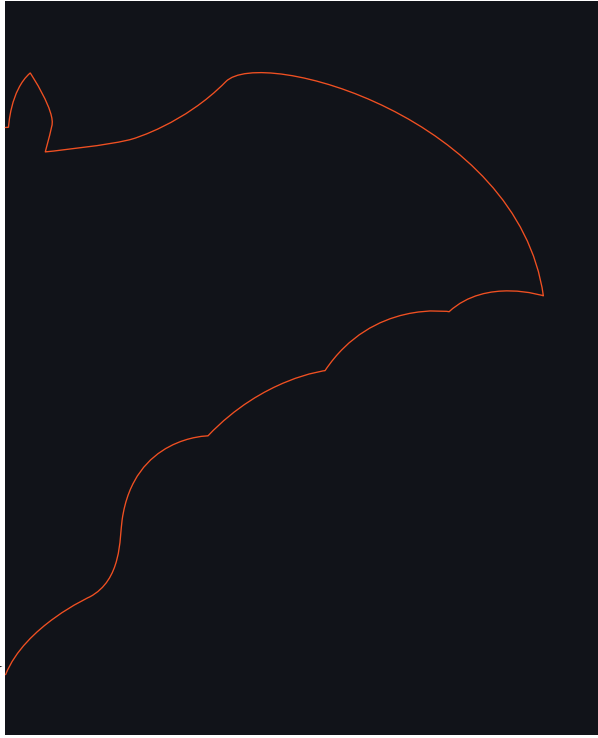


Scale 1:1

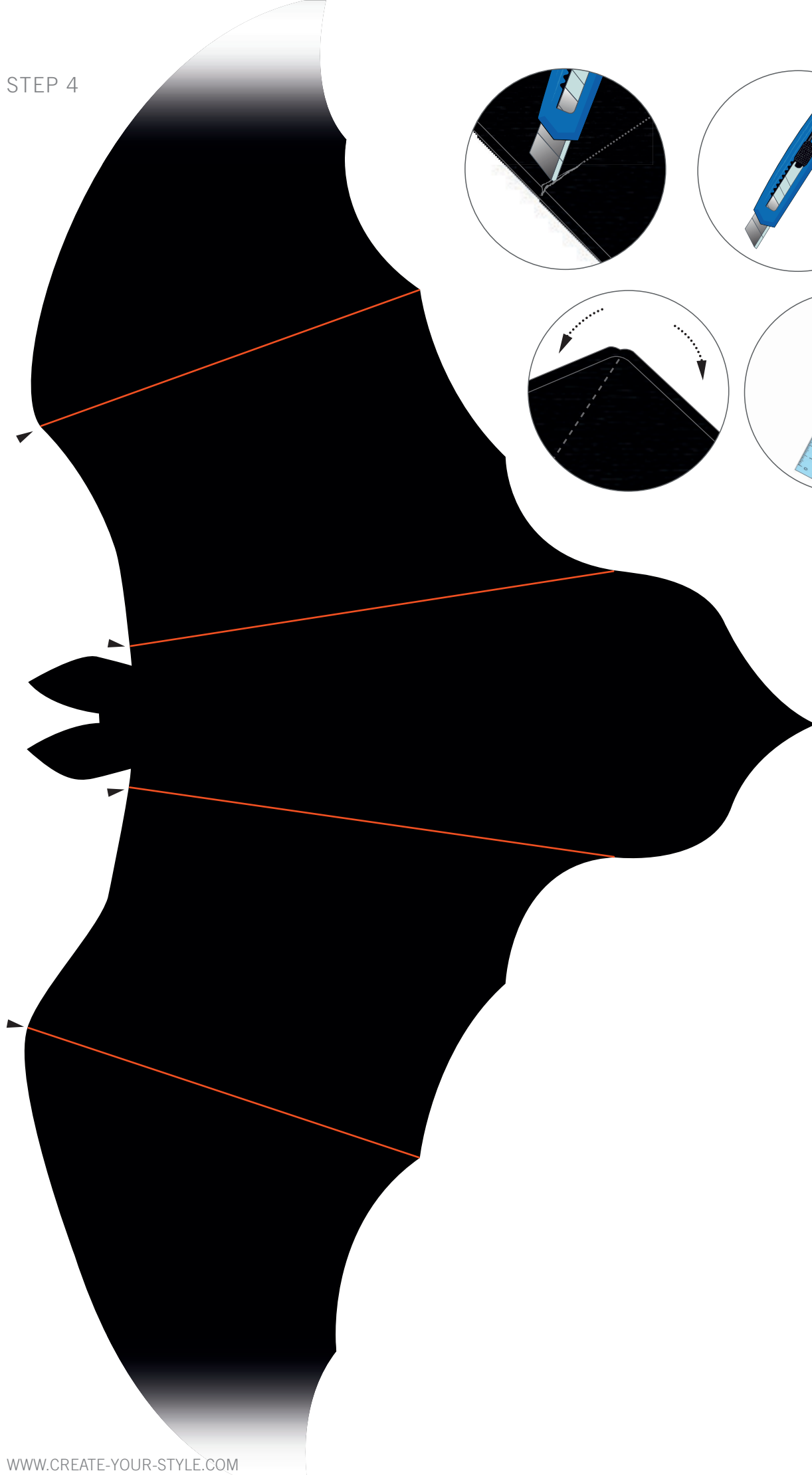
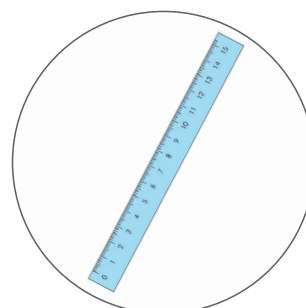
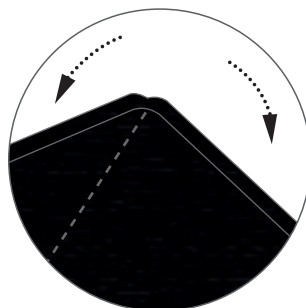
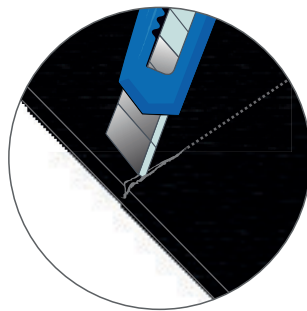
STEP 3



Scale 1:2

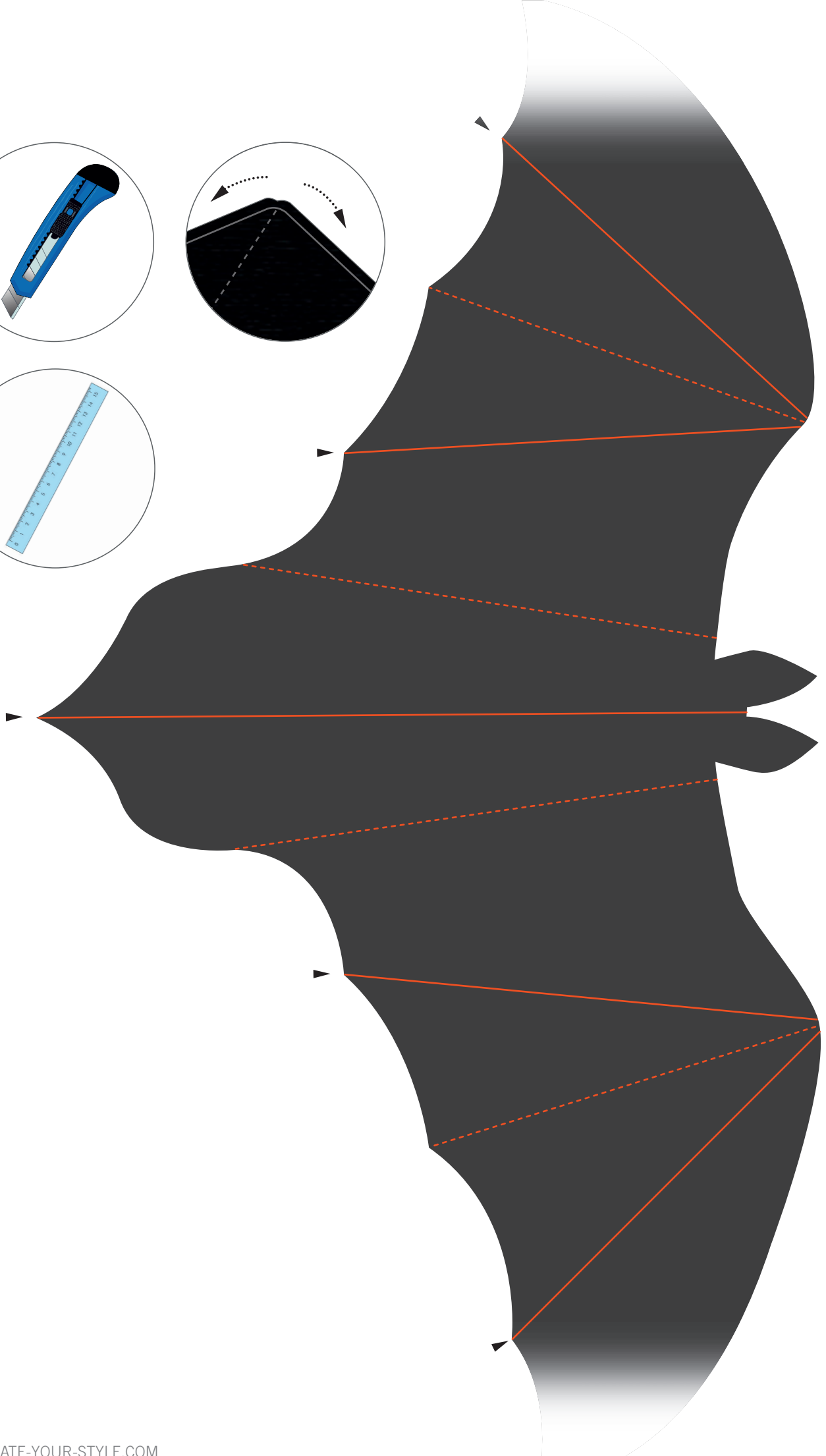
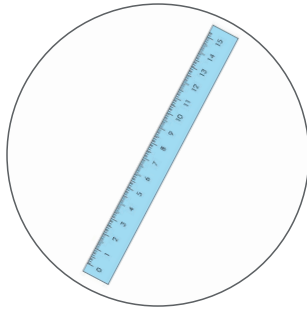
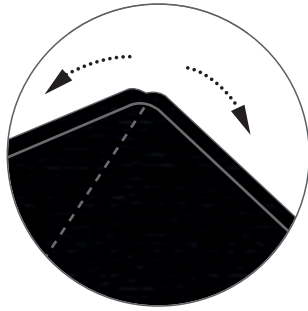


STEP 4

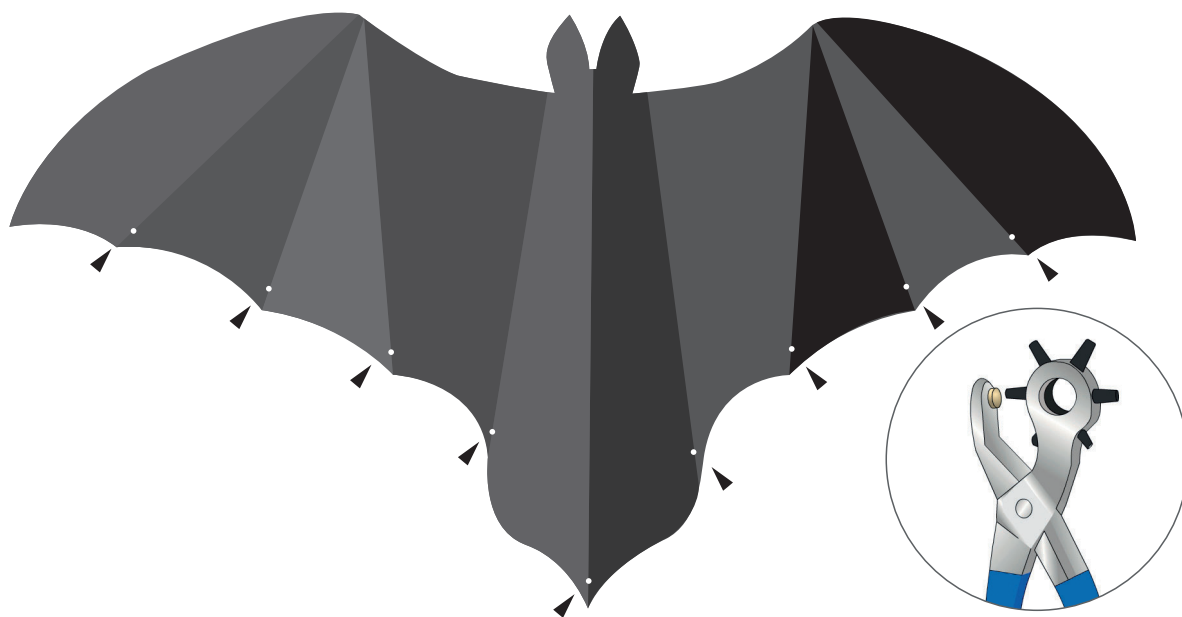


Scale 1:1

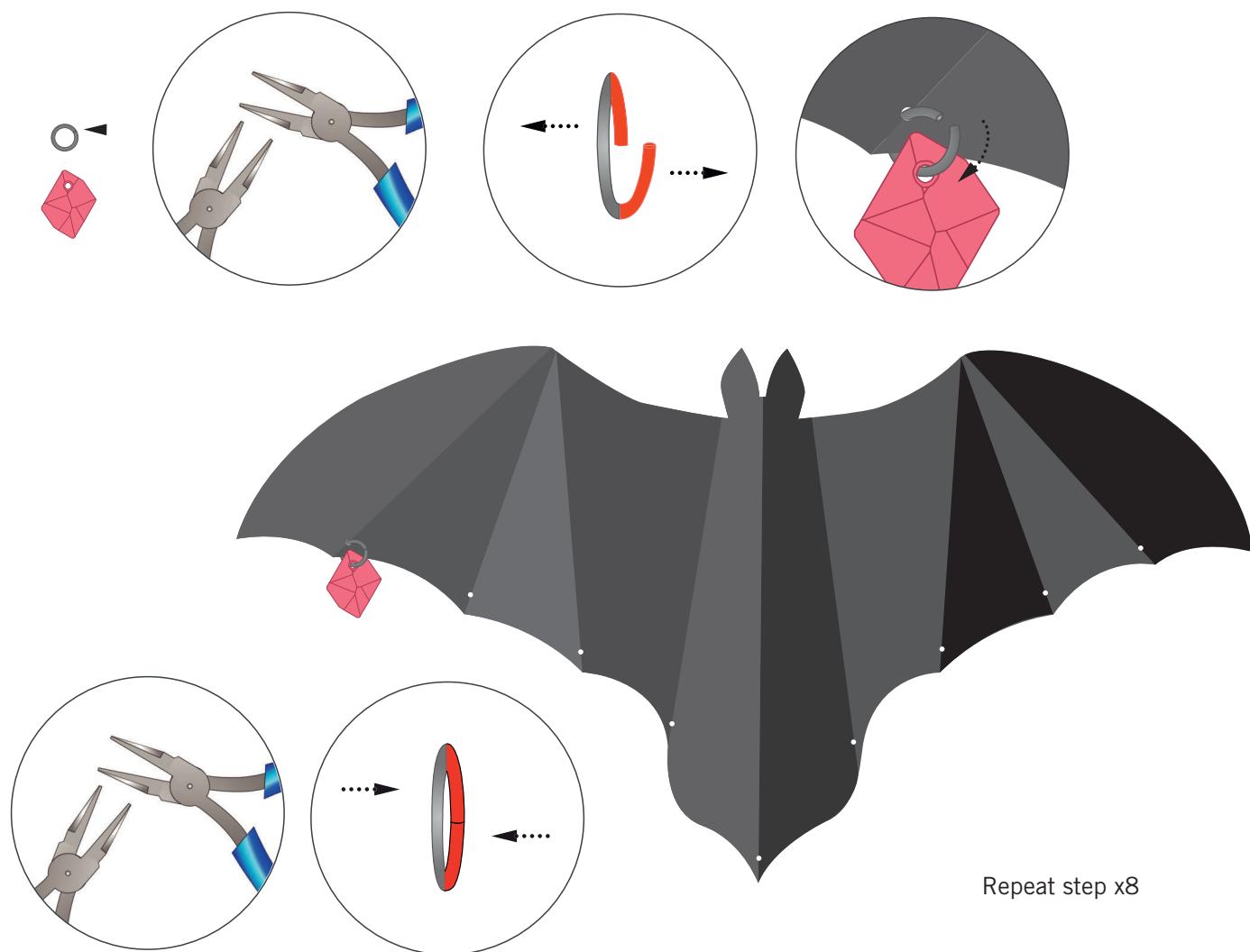
STEP 5

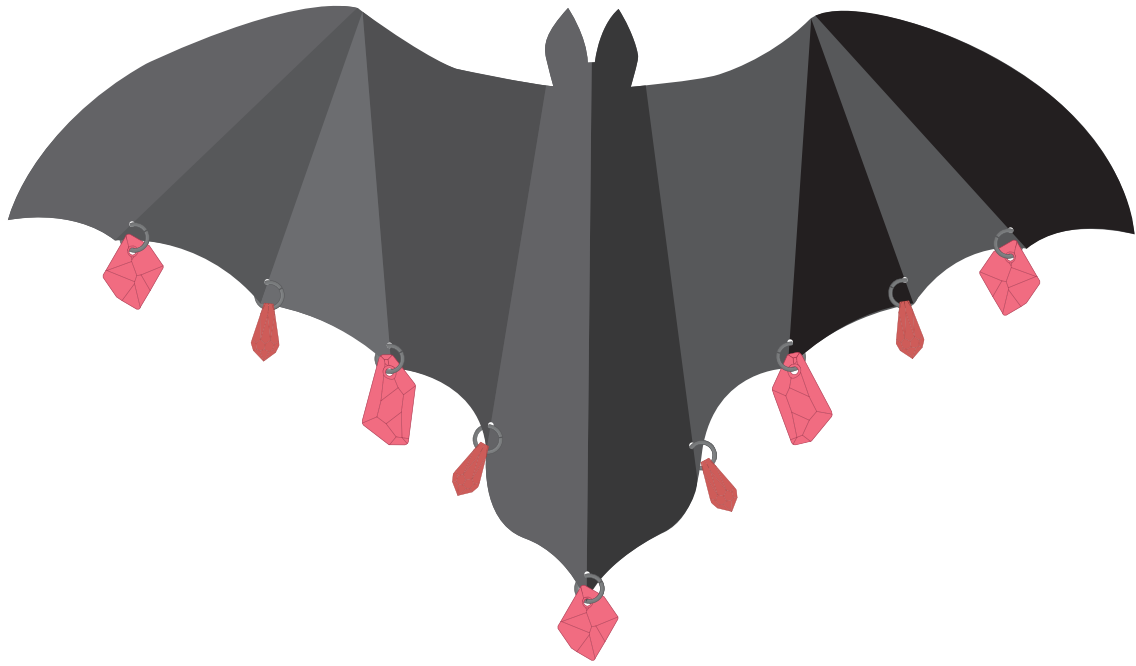


STEP 6

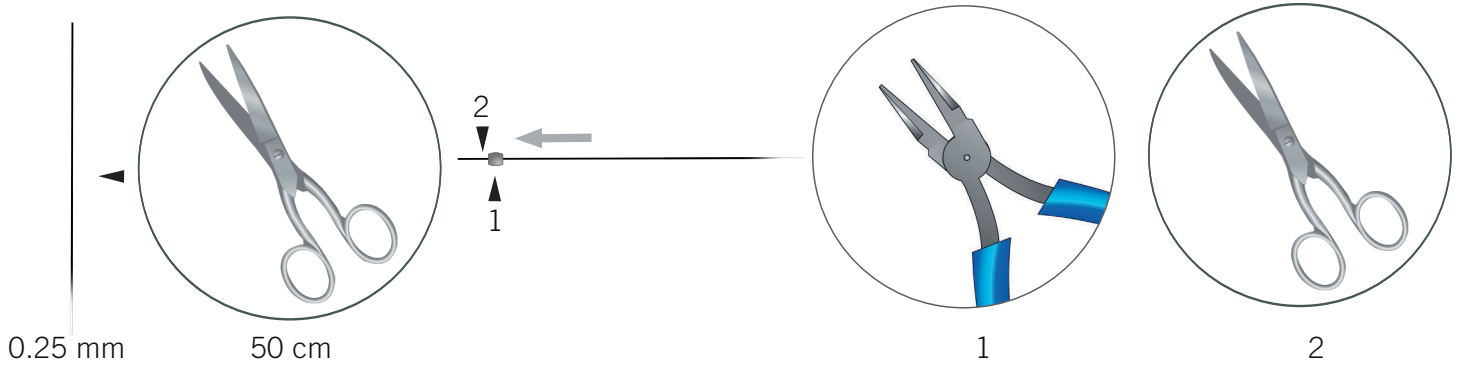


STEP 7

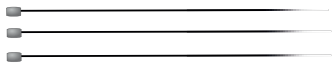




STEP 8

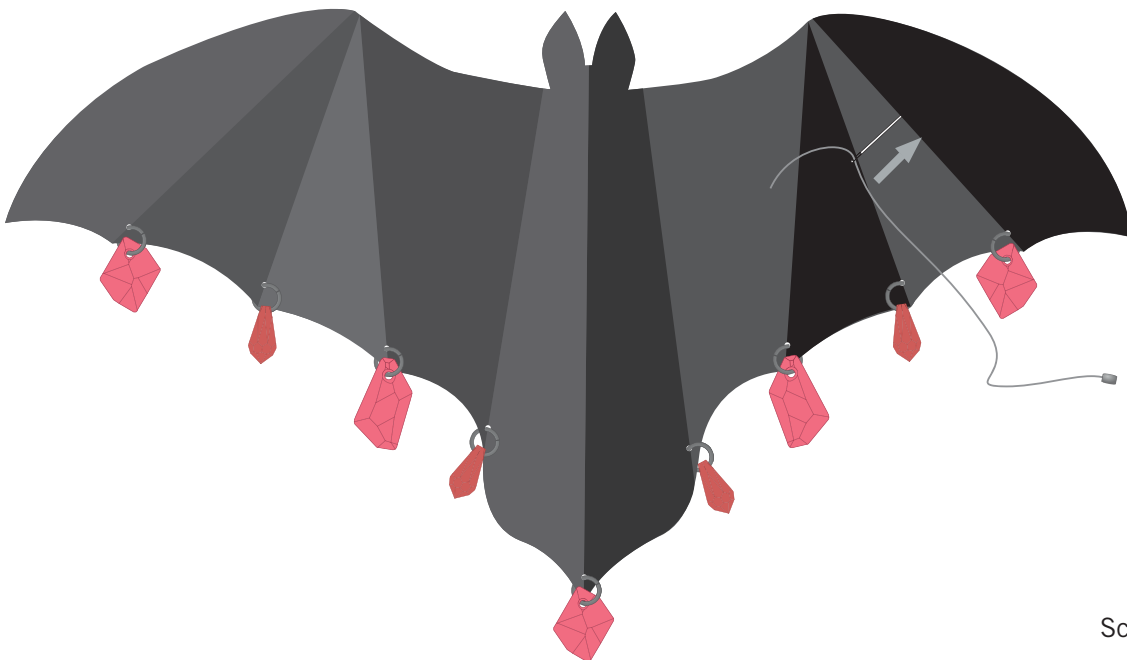


Repeat step x2



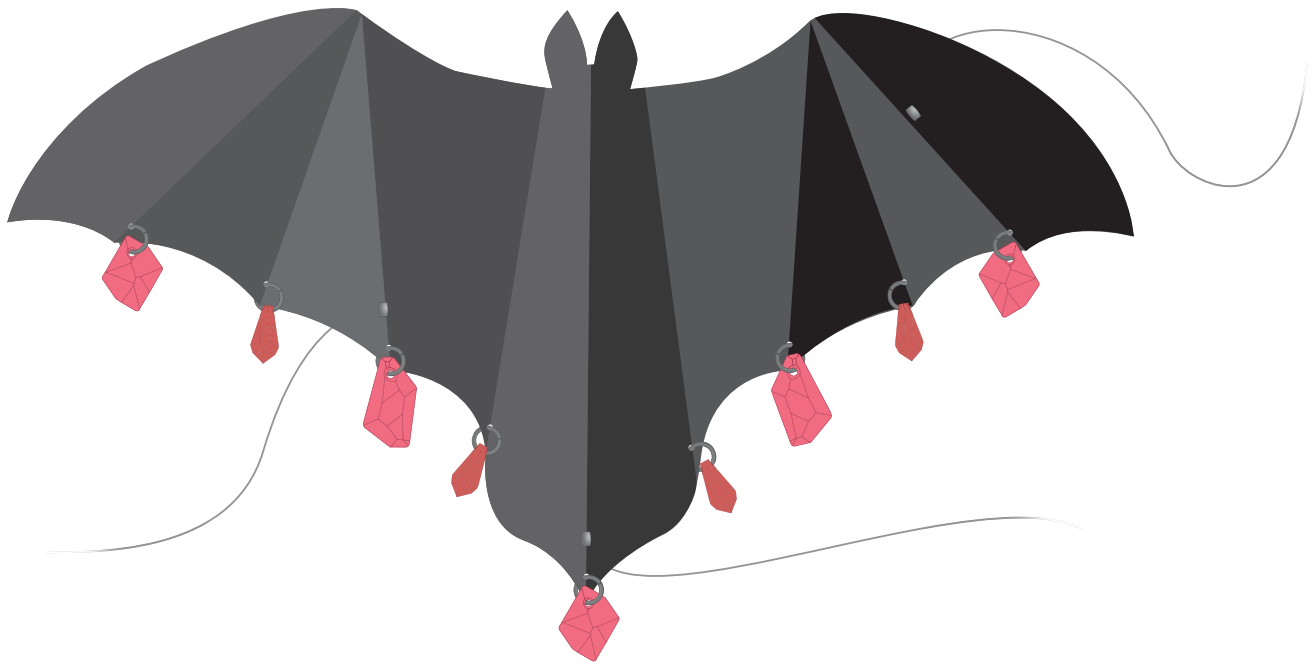
Scale 1:1

STEP 9

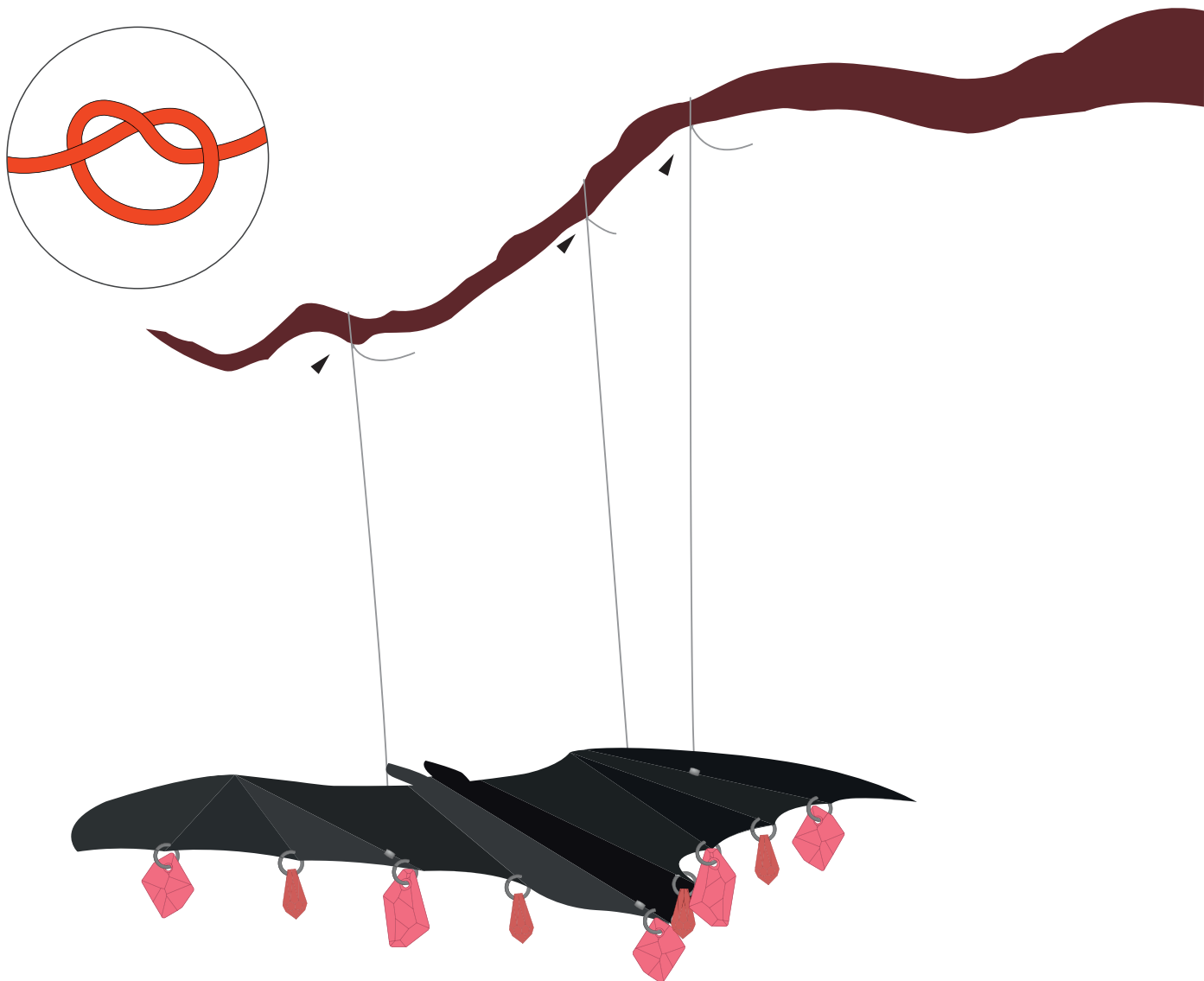


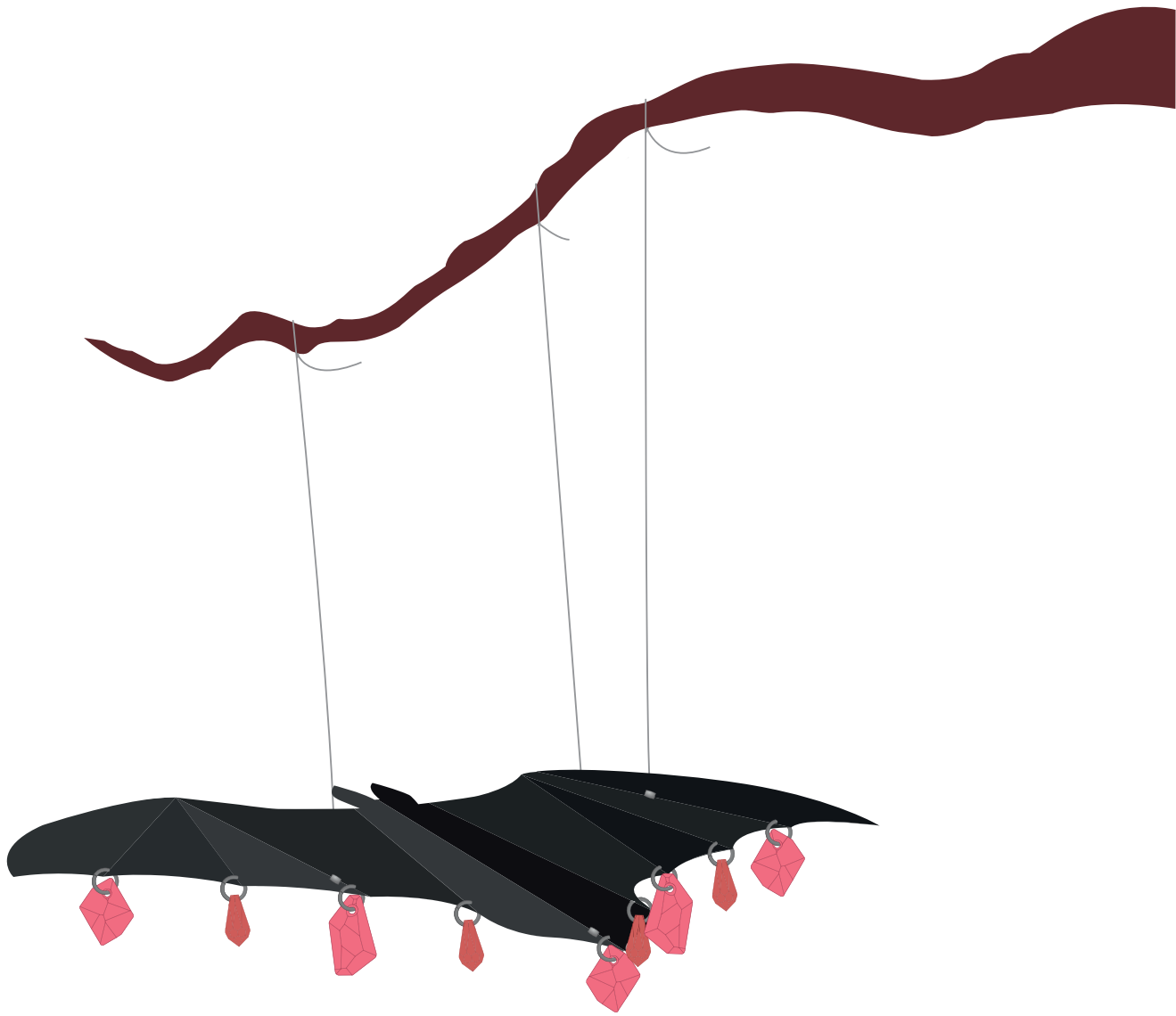
Scale 1:2

Repeat x2:



STEP 10





## CREATE YOUR STYLE with SWAROVSKI ELEMENTS Design Project

### Halloween Decoration "Spooky Bat"

- STEP 1: Fold a piece of 35x25cm cardboard in half on the 35cm length side.
- STEP 2: Print out the illustration in step 2 and cut out the half bat.
- STEP 3: Lay the bat onto the folded cardboard. The bat should end exactly at the center crease of the cardboard. Draw the outline of the bat onto the cardboard with a pencil and remove the printout. Cut out bat from cardboard you see in illustration. Unfold the cardboard bat cutout.
- STEP 4: On the top side of the bat, carve in the lines with cutter and fold cardboard as shown in magnifier of illustration. Be careful not to cut all the way through the cardboard.
- STEP 5: Turn the bat around and repeat step 4 where the red lines are shown in the illustration.
- STEP 6: Punch holes on points shown in the illustration, making sure to leave a space from the edge before punching the hole.
- STEP 7: Open 9 jump rings. Put one of them through the first hole and insert the first Swarovski Pendant art. 6680 and close the jump ring. Repeat this step to attach the remaining Swarovski Pendants on each of the other holes in the following order:
- Art. 6000, 15.5x7.5 mm, Siam
  - Art. 6670, 24 mm, Ruby
  - Art. 6000, 15.5x7.5 mm, Siam
  - Art. 6680, 20 mm, Ruby
  - Art. 6000, 15.5x7.5 mm, Siam
  - Art. 6670, 24 mm, Ruby
  - Art. 6000, 15.5x7.5 mm, Siam
  - Art. 6680, 20 mm, Ruby
- STEP 8: Cut 50cm of nylon thread and slide on a crimp bead and flatten it with flat nose pliers. Repeat this step twice so you have three pieces of thread.
- STEP 9: With the help of a very fine needle pierce this thread in through the back side of the bat as shown in the picture. The crimp bead would act as a stopper to hold the thread from below. Repeat this step with the other two threads at the points shown in the second picture of step 9.
- STEP 10: Tie the ends of nylon thread to a tree branch or other area as desired.